

2022 Design Awards



2022 Design Awards

2022 Board of Directors

President

Shawn Cencer, AIA, NCARB

Vice-President

Dustin Altschul, AIA, LEED AP, CM-BIM

Secretary

Sara L. Tripp, AIA, LEED AP

Treasurer

Juliana Garner, AIA

Past President

Fred J. Grunert, AIA, NCARB, GGP

Michigan Director

Tracy Ezell, AIA

Director

Dieneke Kniffin, AIA

Director

Paul Van Der Kolk, AIA

Director

Hayden Juergens, Associate AIA

Associate Director

Hayward Babineaux, Associate AIA, NOMA

2022 AIA Southwest Michigan Sponsors

Thank You to Our 2022 Sponsors!

Palladium Level

The Eisen Group

Platinum Level



CSMGROUP



Gold Level



Silver Level



Table of Contents

| | |
|----|---|
| 3 | 2022 AIA Southwest Michigan Sponsors Table of Contents |
| 5 | AIA Southwest Michigan Committees From the President |
| 7 | 2022 AIA Southwest Michigan Calendar of Events |
| 9 | 2022 Scholarship Award Winners |
| 11 | 2022 People’s Choice Award Winner 2022 Design Awards Criteria |
| 13 | 2022 Jury AIA Eastern New York |
| 15 | 2022 Winners Merit Awards |
| 17 | 2022 Winners Honor Awards |
| 19 | Allegretti Architects Aransas Pass |
| 21 | Allegretti Architects Dune Home |
| 23 | Byce & Associates, Inc. Advia Credit Union Corporate Headquarters |
| 25 | Byce & Associates, Inc. Charles & Lynn Zhang Portage Community Senior Center |
| 27 | CARMI Design Group, Inc. Berrien Springs Public Schools Arts & Athletic Center |
| 29 | CARMI Design Group, Inc. Sylvester Stadium |
| 31 | Diekema Hamann Architecture & Engineering Bronson Cancer Center |
| 33 | Diekema Hamann Architecture & Engineering Centrica Care Navigators New Central Offices |
| 35 | Diekema Hamann Architecture & Engineering St. Thomas More Student Parish Cross Dedication |
| 37 | Eckert Wordell Clear Vision Institute |
| 39 | Eckert Wordell CRB Kalamazoo |
| 41 | Eckert Wordell San Antonio Eye Center Ambulatory Surgery Center |
| 43 | Schley Nelson Architects Kalamazoo Gospel Mission |
| 45 | Seven Generations Architecture + Engineering Eastern Cherokee Language Speakers Academy |
| 47 | Seven Generations Architecture + Engineering South Edwards Street Project |
| 49 | Seven Generations Architecture + Engineering Matchhead Coffee |
| 51 | TMP Architecture Cascades Elementary School |
| 53 | TMP Architecture Southwest Middle/High School Academia Bilingüe |
| 55 | TowerPinkster Rochester Landing |
| 57 | TowerPinkster Kalamazoo College Natatorium |
| 59 | TowerPinkster The Warner Building at 180 Water Street |
| 61 | Wightman St. Luke’s Ministry Outreach Conceptual |



Southwest Michigan Committees

Advocacy Committee – Chair: Tracy Ezell, AIA

Committee Goals:

- Advance AIA's legislative priorities.
- Engage regulatory entities on issues of importance to architects.
- Empower members to advocate for themselves and their profession.

Duties include:

- Organize a minimum of (2) events per year. Typical events may include organizing local membership attendance at AIA Michigan's Legislative Day and holding a local Legislative Breakfast for Chapter membership.
- Handle issues that pertain to licensing, etc.
- Engage the membership in local advocacy as deemed appropriate.

Public Outreach Committee – Chair: Sara Tripp, AIA

Committee Goals:

- Promote public awareness of the value of design and the role of architects.
- Recognize member excellence.
- Engage with the local community.

Duties include:

- Seek opportunities to make our community aware of architecture and architects in our local community; act on those opportunities.
- Organize the placement of the Design Awards display boards through the Chapter region.
- Volunteer with non-organizations such as Habitat for Humanity providing opportunities for community outreach for the Chapter members and opportunities to make the public aware of architecture and architects.
- Make recommendations to the board for the award of an annual scholarship to a student studying to become an architect.
- Organize the Annual Design Awards event typically held in November.
- Prepare press releases and announcements for winners of design awards annually.

Member Communications Committee –

Chair: Juliana Garner, AIA

Committee Goals:

- Provide AIA member value through communications.
- Support the AIA brand.
- Promote AIA resources to members.
- Offer touch points to members and the public.

Duties include:

- Act as editor for quarterly Chapter newsletter.
- Collect articles, photos, items of interest for distribution and communication with Chapter membership.
- Maintain the information on the Chapter website at www.aiaswm.org.
- Manage all social media accounts for the Chapter to include Facebook and Instagram.
- Assist with all Chapter press releases as required for Chapter events.

Education Committee – Chair: Dustin Altschul, AIA

Committee Goals:

- Offer all AIA members, regardless of component, access to component Continuing Education programming.
- Ensure quality continuing education.
- Maintain continuing education transcripts.
- Offer licensure and career development support for emerging professionals.

Duties include:

- Maintain yearly chapter event calendar.
- Organize, schedule and coordinate the monthly membership continuing education meetings.
- Coordination of events to include: sending out announcements, receiving responses and working with Past President to register events for continuing education credits through the AIA National.
- CES Provider System and writing “thank you” cards as appropriate.
- Orchestrate annual CEU Marathon Day.

Membership Committee – Chair: Paul Van Der Kolk, AIA

Committee Goals:

- Actively recruit and retain members.
- Engage members in fellowship and community.
- Seek member feedback.

Duties include:

- Work with other local organizations (NAWIC & CFMA) to organize annual golf outing.
- Organize local AIA golf league as interest allows.
- Hold minimum of (2) Chapter events per year that are dedicated to Chapter

recruitment.

- Maintain an accurate AIA SWM Chapter membership list.
- Maintain Chapter ARE Library and facilitate checking out and return of study materials.
- Engage with local Architecture Schools for an annual local Firm Tour in the Kalamazoo area.

Governance Committee – Chair: Shawn Cencer, AIA

Committee Goals:

- Ensure the chapter complies with federal and state laws.
- Mitigate Chapter risk.
- Keep institute, state, and local strategic plans up to date and aligned.
- Develop visionary leaders to serve at institute, state, and local levels.

Duties include:

- Maintain records as required for audit by AIA National as to maintain Chapter accreditation.
- Assist with the submission of application for Chapter accreditation.
- Continually review the accreditation requirements and in a timely manner advise the board of any variances that might jeopardize accreditation.
- Assist Chapter board members as needed in the fulfillment of any items that would directly jeopardize Chapter accreditation.
- Communicate with the Chapter membership as required.

Finance & Operations Committee – Chair: Fred Grunert, AIA

Committee Goals:

- Conduct secure, transcript, and timely financial practices.
- Protect tax-exempt status.
- Participate in AIA volunteer and component staff training opportunities.

Duties include:

- Managing Chapter finances.
- Obtaining Chapter sponsorships.
- Pursuing, obtaining, and coordinating Chapter board member nominations.

From the President

Dear AIA Southwest Michigan Chapter Members,

Welcome to the 2022 AIA Southwest Michigan Design Awards celebration! We are thankful to once again be gathering in person with you, and we are excited for our inaugural year with a new format, in the brand-new Portage Community Senior Center. 2022 has been another year of twists and turns, through which we have remained resilient and adaptable. The entries we received this year once again demonstrate the high caliber of talent and passion embodied by all of the area firms.

This year, we have aligned our awards structure with the AIA's Framework for Design Excellence. Instead of being judged primarily on design aesthetics, the guest jury now must consider each project's unique story within the context of ten principles that inspire sustainability, resilience, and inclusive design. Also new this year, the Chapter is offering recognition awards for individuals that have made impactful contributions to architecture and the community. These awards are based upon nominations received from our chapter members. The hope is that we will learn from the successes and results of this year's event, and apply that knowledge to future years.

At its core, the Design Awards is meant to be a time of celebration, recognition, and appreciation for the vast depth of design talent in our region. None of this would be possible without our members and sponsors, so thank you for your ongoing support and acknowledgement of the value that our organization provides. Furthermore, tonight would not be possible without the incredible volunteer efforts of our entire Design Awards Committee.

Lastly, we are beyond excited this year to be able to offer you a sneak-peak of our new architecture app. The app was born out of an idea to convert an outdated, printed walking tour brochure into a digital format that could be more readily-accessed by the public. For the past few years, our public outreach committee has working hard to bring this vision to reality. The initial launch will focus on 50 notable buildings in the Kalamazoo area, with the idea that the app can continually be expanded, to ultimately offer information and architectural walking tours throughout Southwest Michigan. This is a large undertaking, and it is an investment that we believe will pay dividends. We are working with DC Tree, (the same developer that helped create the Mid-Century Modern Midland App).

Shawn Cencer, AIA, NCARB
AIA Southwest Michigan Chapter President

January 2022

| | |
|--------|---|
| Jan 21 | AIA SWM Public Outreach Committee Meeting (Virtual) |
| Jan 21 | AIA SWM Design Awards Committee Meeting (V) |
| Jan 26 | AIA SWM Board Meeting (V) |

February 2022

| | |
|-----------|--|
| Feb 16 | AIA SWM Board Meeting (V) |
| Feb 17 | AIA SWM Public Outreach Committee Meeting (V) |
| Feb 18 | AIA SWM Design Awards Committee Meeting (V) |
| Feb 18 | AIA SWM Portage Community Senior Center Building Tour (1 HSW for 2021) |
| Feb 22-24 | AIA Grassroots 2022 (V) |

March 2022

| | |
|--------|---|
| Mar 4 | AIA SWM Education Committee Meeting (V) |
| Mar 4 | AIA SWM / Andrews University AIAS Firm Tours |
| Mar 9 | AIA SWM FenstraPro Presentation (V) (1 HSW) |
| Mar 11 | AIA MI 26th Annual AESLC Legislative Day |
| Mar 24 | AIA SWM Public Outreach Committee Meeting (V) |
| Mar 25 | AIA SWM Design Awards Committee Meeting (V) |
| Mar 30 | AIA SWM Board Meeting (V) |

April 2022

| | |
|-----------|--|
| April 7-8 | AIA MI 54th Annual Healthcare Facilities Conference, Traverse City, MI |
| April 15 | AIA SWM Education Committee Meeting (V) |
| April 21 | AIA SWM Public Outreach Committee Meeting (V) |
| April 22 | AIA SWM Design Awards Committee Meeting (V) |
| April 27 | AIA SWM Board Meeting (V) |
| April 27 | AEIDCSWM Golf League Begins (Weekly at Gull Lake View Golf Resort) |

May 2022

| | |
|-----------|--|
| May 13 | AIA SWM Education Committee Meeting (V) |
| May 16-18 | AIA SWM MiCareerQuest Southwest 8th Grade Job Fair, Kalamazoo, MI |
| May 18 | AIA/NAWIC/CFMA Golf Committee Meeting (V) |
| May 19 | AIA SWM Public Outreach Committee Meeting (V) |
| May 20 | AIA SWM Design Awards Committee Meeting (V) |
| May 24 | AIA SWM The Profitability of Healthy Spaces Presentation (V) (1 HSW) |
| May 25 | AIA SWM Early Design Energy Modeling Presentation (V) (1 LU/HSW) |
| May 25 | AIA SWM Board Meeting (V) |

June 2022

| | |
|------------|---|
| June 2 | AIA SWM Interior Acoustics Presentation (V) (1 HSW) |
| June 9 | AIA National 2022 - Annual Meeting (V) |
| June 10 | AIA SWM Education Committee Meeting (V) |
| June 17 | AIA MI Design Awards and Recognition, Detroit, MI |
| June 23-25 | A'22 AIA National Conference on Architecture, Chicago, IL |
| June 23 | AIA SWM Public Outreach Committee Meeting (V) |
| June 24 | AIA SWM Design Awards Committee Meeting (V) |
| June 29 | AIA SWM Board Meeting (V) |

July 2022

| | |
|---------|---|
| July 14 | AIA SWM Kalamazoo County Downtown Justice Facility Building Tour (1.5 LU/HSW) |
| July 15 | AIA SWM Education Committee Meeting (V) |
| July 27 | AIA SWM Bronco Construction Research Center Building Tour (1.5 LU/HSW) |
| July 28 | AIA SWM Public Outreach Committee Meeting (V) |

2022 Calendar of Events

August 2022

| | |
|---------|---|
| Aug 2 | AIA SWM Berrien Springs Public Schools: Arts & Athletic Center (AAC) Building Tour (2 LU/HSW) |
| Aug 4-6 | NOMA Project Pipeline Summer Camp - Kalamazoo (12 LU) |
| Aug 4-7 | AIA MI 79th Annual Mid-Summer Conference, Mackinac Island, MI |
| Aug 12 | AIA SWM Education Committee Meeting (V) |
| Aug 16 | AIA SWM Floodplain 101-Virtual Workshop (V) (1 LU/HSW) |
| Aug 24 | AIA SWM Design Awards Committee Meeting (V) |
| Aug 25 | AIA SWM Public Outreach Committee Meeting (V) |
| Aug 31 | AIA SWM Board Meeting (V) |

September 2022

| | |
|------------|--|
| Sept 6 | AIA SWM Solar Air Heating Presentation (V) (1 HSW) |
| Sept 16 | AIA/ NAWIC / CFMA Annual Golf Outing, Heritage Glen Golf Course, Paw Paw, MI |
| Sept 16-18 | AIA MI 33rd Annual Design Retreat, Camp Nissokone, Oscoda, MI |
| Sept 19 | AEIDCSWM Golf League Ends |
| Sept 22 | AIA SWM Public Outreach Committee Meeting (V) |
| Sept 23 | AIA SWM Design Awards Committee Meeting (V) |
| Sept 28 | AIA SWM Board Meeting (V) |

October 2022

| | |
|-----------|--|
| Oct 12 | AIA SWM Continuing Education and Annual Business Meeting, The Park Club, Kalamazoo, MI (2 LU/HSW - 1 Original Content) |
| Oct 12-13 | AIA MI Annual Business Meeting and Leadership Retreat, Bay City, MI |
| Oct 14 | AIA SWM Design Awards Committee Meeting (V) |
| Oct 14 | AIA SWM Education Committee Meeting (V) |

| | |
|-----------|---|
| Oct 19 | AIA SWM Lunch, Learn and Enjoy the View - 2022 CEU Relay Days, The Exchange Building, Kalamazoo, MI (3 LU/2 HSW - 1 Original Content) |
| Oct 20 | AIA SWM Public Outreach Committee Meeting (V) |
| Oct 24 | AIA SWM Education Committee Meeting (V) |
| Oct 24-26 | AIA SWM MiCareerQuest Southwest 8th Grade Job Fair, Kalamazoo, MI |
| Oct 26-30 | NOMA Conference 2022: Unplugged, Nashville, TN |
| Oct 27 | AIA SWM 2022 Design Awards (2 LU/HSW) |

November 2022

| | |
|--------|--|
| Nov 2 | AIA SWM Designing with Commercial / Industrial Insulated Metal Wall Panels Presentation (Hybrid) (1 HSW) |
| Nov 11 | AIA SWM Education Committee Meeting (V) |
| Nov 16 | AIA SWM Board Meeting (V) |
| Nov 17 | AIA SWM Public Outreach Committee Meeting (V) |

December 2022

| | |
|--------|--|
| Dec 8 | AIA SWM Public Outreach Committee Meeting (V) |
| Dec 9 | AIA SWM Education Committee Meeting (V) |
| Dec 14 | AIA SWM Board Meeting (V) |
| TBD | AIA SWM Miller Davis Digital Project Management Presentation |
| TBD | AIA SWM CSM Digital Project Management Presentation |

2022 Scholarship Award Winners



Benneda Mosley: Ferris State University

Ms. Mosley has been awarded our most recent addition to the scholarship program, \$1,000 for use toward tuition expenses as a student attending a community school/technical school architectural program. This gift is made possible from monies yielded at the AIA/NAWIC/CMFA Annual Golf Outing in conjunction with a matching \$500 grant from AIA National.

Benneda is finishing up her second year in the architecture program at Ferris State University. She will be continuing into the Bachelor of Science in Architecture and Sustainability program next year, with graduation likely in 2025. She is a resident of Kentwood, Michigan, and therefore has ties to west Michigan. She hopes to pursue her MArch at KCAD and stay close to her home.

Ferris State University faculty members feel strongly about Benneda's academic performance and demeanor. She is exceptionally curious and creative. She is a self-motivated and committed student who can accept feedback and translate it into successful iterations of her project. She is eager to understand architecture and is not afraid to ask for help; and her line of inquiry commonly relates directly to her problem-solving process. She is reserved and respectful of faculty and classmates and works well independently and in a team situation. She has learned about the construction industry through her family construction business, which inspired her to become a practicing architect

Benneda possesses strong visualization skills, quickly grasps technical skills, and follows instructions, thus submitting written and graphic projects in a professional and timely manner. Even when quarantined due to COVID-19, she borrowed a portable drafting board to use in her room so she would not fall behind in her work.



Ashley Randolph: Andrews University

Ms. Randolph has been awarded AIA Southwest Michigan's highest scholarship of \$2,250 for use toward tuition expenses as a student attending a 5-year NAAB accredited program. This gift is made possible from monies yielded at the AIA/NAWIC/CMFA Annual Golf Outing in conjunction with a matching \$1,000 grant from AIA National.

The School of Architecture & Interior Design at Andrews University has nominated Ashleigh Randolph for the award. She meets all the required criteria. She is in her 5th year of school, her GPA is 3.66, she is involved with the community, current AIAS member and is a MI resident and US Citizen.

2022 Scholarship Award Criteria

AIA Southwest Michigan Scholarship Program

As part of AIA Southwest Michigan's commitment to supporting the future of the architectural profession, the Scholarship Committee, in conjunction with the Public Outreach and Membership Committees offer student scholarships each year. The funds awarded are provided by proceeds from the annual AIA/NAWIC/CMFA Annual Golf Outing and matched with monies secured from AIA National's AIA Component Matching Scholarship Grant Program.

For many years, AIA National has been awarding the scholarship grants to state and local components, or their affiliated foundations, as part of their mission to support scholarship programs for architecture students. Securing this grant is just one way that AIA Southwest Michigan has demonstrated dedication to strengthening bonds and encouraging engagement with architectural students in our Chapter Region.

Andrews University is the only NAAB accredited architecture program within our chapter region and we have developed a long standing relationship supporting them annually with a scholarship award. Recently, an additional opportunity through AIA National's matching grant program has allowed us to offer a second scholarship to a worthy student studying an architecture related program at a community school/technical school. We have begun developing relationships with approved schools to grow this portion of our program.

The matching scholarship grants from AIA National are:

- \$ 1000 for a student attend a 5-year NAAB accredited program.
- \$ 500 for a student attending a community school/technical school architectural program.

The AIA Southwest Michigan Chapter grant requirements are:

- A student in good academic standing nearing completion of their studies in Architecture or Architectural program.
- A student that has demonstrated community involvement.
- A student that has a passion for architecture and a current AIAS member.
- Resident of Michigan and US Citizen (preferred but not required).
- A student with local ties to Southwest Michigan (preferred but not required).

With the AIA/NAWIC/CMFA Golf Outing being highly instrumental to the success of our scholarship program, we'd like to urge our membership to consider volunteering to help organize the event. As the Golf Outing grows, our ability to produce more student impact grows. Interested parties can reach out to the Chapter at aiaswm@gmail.com.

2022 People's Choice Award

Byce & Associates, Inc.

Charles & Lynn Zhang Portage Community Senior Center

City of Portage

Portage, MI

Category: Built



2022 Design Awards Criteria

OBJECTIVE

AIA Southwest Michigan seeks to recognize and publicize excellence in architecture, to bring to the public's attention outstanding work completed by architects in our chapter and encourage good design for the sustainable projects within our communities.

SUBMISSION REQUIREMENTS

AIA Southwest Michigan has asked that each submission provide a Project Summary, a Project Story, Graphic Representation, and an anonymous version of their Exhibit Board.

In 2022 we are asking that each submission be presented through the lens of the Framework for Design Excellence. The Project Story should describe the Design Problem, the Design Solution, and Design Excellence by incorporating a minimum of 3-5 answers to questions* culled from the AIA National Framework for Design Excellence Best Practices.

ACHIEVING DESIGN EXCELLENCE

The Framework for Design Excellence represents the defining principles of good design in the 21st century. Comprised of 10 principles, it seeks to inform progress toward a zero-carbon, equitable, resilient, and healthy built environment. It is intended to be accessible and relevant for every architect, every client, and every project, regardless of size, typology, or aspiration.

There are 10 Principles in the Framework for Design Excellence, broken into (3) Topics.

Related to those topics, ALL Principles (2-10) must be SUCCESSFULLY addressed to achieve Principle (1): Design for Integration.

Principle (1) Design for Integration (achieved if successfully addresses ALL other Principles)

- **Topic 1: Design for People**

Principle (2) Design for Equitable Communities

Principle (3) Design for Well-Being

Principle (4) Design for Discovery

- **Topic 2: Resources & Climate Impacts of Design**

Principle (5) Design for Economy

Principle (6) Design for Resources

Principle (7) Design for Water

Principle (8) Design for Energy

- **Topic 3: Natural Systems and Design for Change**

Principle (9) Design for Ecosystems

Principle (10) Design for Change (resilience)

Eastern New York History:

Though the American Institute of Architects Eastern New York (AIAENY) came into existence in 1930 with Norman Sturgis as President, it was not until 1956 that it became incorporated with a set of objectives:

- To organize and unite in fellowship the architects of the United States of America
- To combine their efforts so as to promote the aesthetic, scientific and practical efficiency of the profession
- To advance the science and art of planning and building by advancing the standards of architectural education, training and practice
- To coordinate the building industry and the profession of architecture to insure the advancement of the living standards of our people through their improved environment
- To make the profession of ever-increasing service to society.

The territory of operations was identified to include the 14 counties of Clinton, Essex, Hamilton, Warren, Washington, Saratoga, Fulton, Montgomery, Schenectady, Rensselaer, Albany, Schoharie, Greene, Columbia, and the north halves of Ulster and Dutchess. The geographical designation remains the same today.

Over the years, the physical location of the chapter has changed from: the Trinity United Methodist Church on Lark Street in Albany, a carriage house in Washington Park shared with AIANYs offices, and a rented office space in the Troy Arts Center. Currently the chapter is managed by the state component, AIA New York State.

Deliberation Process:

The Jury received the awards submissions about a week before deliberations and initially reviewed the projects independently. Following this the jury met and familiarized themselves with the Design Excellence framework. Each project was again briefly reviewed together in the group and then was assigned a numerical rating 1-10 that each juror felt the project met when aligned and compared to each of the ten design excellence principals. These values were reviewed and made a consensus among the jurors. An additional category was added for overall design aesthetic. After this all the projects were tallied in a spread sheet the results were reviewed and finalized. A few of the projects were clear honor or merit awards, others were on the cusp and a second voting session was held to determine the fate of these projects.

2022 Design Awards Jury



Scott Townsend – ENY NYS Director

Scott is a Principal at SWBR, a regional architecture firm with three offices upstate. He, along with another Principal, run the Eastern NY office, located in Troy, NY. Scott is more than an architect that designs buildings – he has a passion for healing and invigorating neglected and under served communities, neighborhoods, and buildings. He was drawn to architecture out of his desire to create something that is local, tangible, and addresses a larger societal or global issue.



Andrew Petruzzelli – ENY President

Andrew is a Project Manager at Thaler Reilly Wilson Architecture and Preservation located in Albany NY. He has been a licensed architect since 2015, and previously worked at HOLT Architects for 7 years. Andrew received a Masters in Architecture from University at Buffalo in 2008. Andrew's passion is adaptive reuse projects. He enjoys working on historic buildings to create new energy and uses, providing communities with re-activated main streets and urban areas.



Caitlin Daly – ENY President Elect

Caitlin started her venture into the profession by earning a B. Arch at Rensselaer Polytechnic Institute in 2009. The course of study at RPI gave her a thorough foundation in theory and technology. After graduating she had the opportunity to work on multiple projects ranging from small-scale libraries to large-scale school projects. After a few years of working in an office she decided to return to academia to pursue an MA in History and Critical Thinking at the Architectural Association in London. Her research there focused on the influence of technology on the methods of architectural practice. Upon completing her studies, she returned to NY to concentrate on education projects as a Project Architect at CSArch.



Karin Kilgore-Green – ENY Treasurer

Karin Kilgore-Green, AIA, LEED AP BD+C is Vice President/Principal at JMZ Architects & Planners, P.C. She has 30 years of experience in the planning, design, and construction of educational facilities. Recent projects include the expansion of Clarkson University's Science Center, the Tang Welcome Center at Cornell University, and Adirondack Hall STEM Building at SUNY Adirondack. Karin earned her Bachelor and Master of Architecture at Syracuse University, where she was also an assistant professor and adjunct in the School of Architecture. She is currently serving at the treasurer for the ENY chapter.

Byce & Associates, Inc.
Corporate Headquarters

Advia Credit Union
Kalamazoo, MI
Category: Built



**Diekema Hamann
Architecture &
Engineering**
Bronson Cancer Center

Bronson Methodist Hospital
Kalamazoo, MI
Category: Built





2022 Merit Award Winners

Schley Nelson Architects A Shelter From Their Storm

Kalamazoo Gospel Ministries
Kalamazoo, MI
Category: Built



Byce & Associates, Inc. Charles & Lynn Zhang Portage Community Senior Center

City of Portage
Portage, MI
Category: Built

TowerPinkster Natatorium

Kalamazoo College

Kalamazoo, MI

Category: Built



TMP Architecture + C2AE Southwest Middle/ High School Academia Bilingüe

Grand Rapids Public Schools

Grand Rapids, MI

Category: Built





2022 Honor Award Winners

TowerPinkster **The Warner Building**

Catalyst Development
Kalamazoo, MI
Category: Built



Seven Generations **Architecture +** **Engineering** **Eastern Cherokee** **Language Speakers** **Academy**

Eastern Band of Cherokee
Cherokee, North Carolina
Category: Conceptual



Aransas Pass

Corpus Christi, Texas

Allegretti Architects

Client: Irvine | Long Beach, Indiana

Category: Conceptual

Architect: John W. Allegretti, FAIA | St. Joseph, Michigan

In July of 2020, we were contacted by one of our former clients. They had just purchased a waterfront marina home in Aransas Pass, Corpus Christi, Texas with the intention to renovate and double the size of their Texas Alamo style abode. They asked us to transform it into another home just like their home in Long Beach, Indiana.

After initial discussion with the client we decided it was important to design a plan that would provide living and working space for them and their son's families when they came to visit. In addition, they wanted to maximize the views to the water and create as much hosting space as possible. As we went through our iterative design process we discovered renovating the existing structure restricted the final design intent. Without the need to save the existing structure we were able to re-focus the design around the stunning water views and a modern, streamlined approach to the final design. The new and current design was able to achieve all our original design intentions as well as maximize the amazing panoramic views of the gulf.

We are excited to see the completion of this project and have our clients start hosting their family in the amazing home with these amazing views.







Dune Home

Stevensville, Michigan

Allegretti Architects

Client: Shao | Stevensville, Michigan
Category: Built

Architect: John W. Allegretti, FAIA
Engineer: James F. Giannini & Associates
Landscape Architect: The Pizzo Group
General Contractor: Herzler Construction
Photographer:
Patrick Bosse & Joshua Nowicki | Holt Bosse

In April of 2019 we were approached by a couple interested in finding a living space to call “home”. They initially contacted us when they discovered a home we had designed in 2005. After preliminary discussions about needs and budget we suggested they might want to build a new home.

As we started the design process we discovered this home would be fun to design but challenging, due to the site. It had a large, steep dune that limited the space we were allowed to build on. We were confined to developing a 2,550 square foot home on a 20,145 square foot lot that had a buildable contiguous area of 6.4% (1,289.28 square feet). Our solution was to make as much built space as possible livable space. However, we were able to accommodate all the client’s needs including a home office, virtual golf range, three bedrooms and plenty of access to outdoor space.

The design and construction process went through many setbacks due to the pandemic and our contractor relocating to Idaho. After over a year and a half, presented to you is a home and design we are very proud of.



The Advia Credit Union Corporate Headquarters, set on 36-acres of reestablishing woodlands, is distinct from its surrounding context of the suburban commercial environment.

The site is located on a main arterial road amongst big box stores, national franchised chains, and single-family residential neighborhoods. A central and inviting, functional atrium was incorporated to draw customers, staff, and the community into the three-story, sunlit space. From this vantage point, the building becomes intuitive in its organization and placement of the various multi-use functions and associated wayfinding. The atrium provides a dynamic space that connects the various functions: retail banking, member services, corporate management, community event space, employee amenities, as well as the mixed-use retail and tenant spaces.

The site includes public walking trails, multiple meeting, conference, and event space rooms all dedicated to community focused programs and uses located off the atrium. The large community room is equipped with a kitchen and catering functions, presentation capabilities, an interior spill out reception space, and an exterior terraced plaza and fire pit for public programmed use.

With its founding tied to the Kalamazoo area, Advia is an active corporate sponsor and advocate for this community.



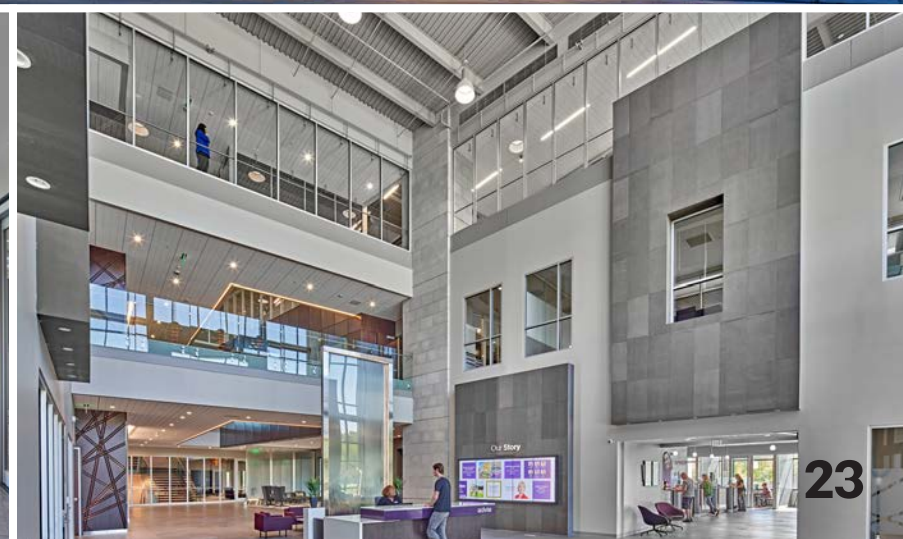
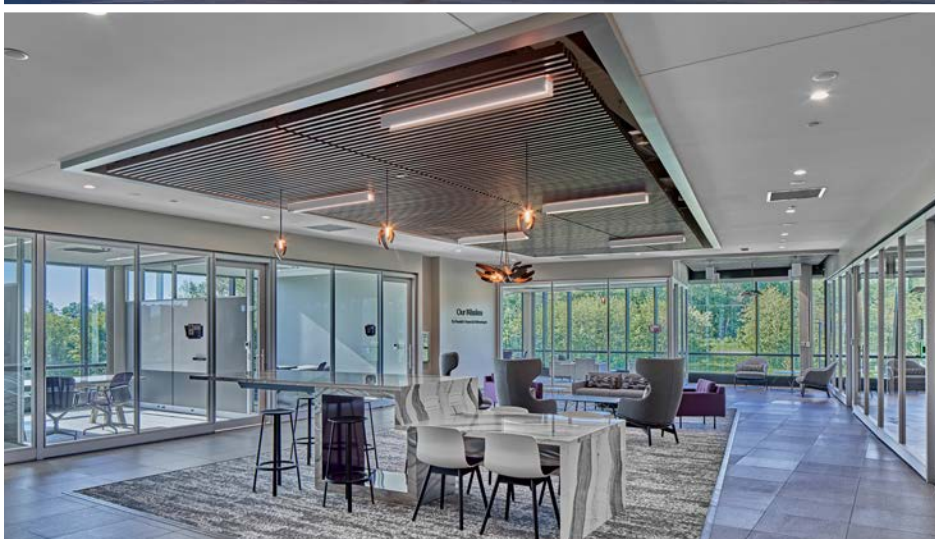
Advia Credit Union Corporate Headquarters

Kalamazoo, Michigan

Byce & Associates, Inc.

Client: Advia Credit Union | Kalamazoo, Michigan
Category: Built

Architect, Interior Design, Mechanical, Electrical,
Structural and Civil Engineer: Byce & Associates, Inc.
Landscape Architect: Johnson Hill Land Ethics Studio
Construction Manager: Granger Construction
Photographer: Jason Keen + Co. Photography







Charles & Lynn Zhang Portage Community Senior Center

Portage, Michigan

Byce & Associates, Inc.

Client: City of Portage | Portage, Michigan

Category: Built

Architect, Interior Design, Mechanical, Electrical,

and Structural Engineer: Byce & Associates, Inc

Civil Engineer, and Landscape Architect: Hurley & Stewart

Construction Manager: AVB, Inc.

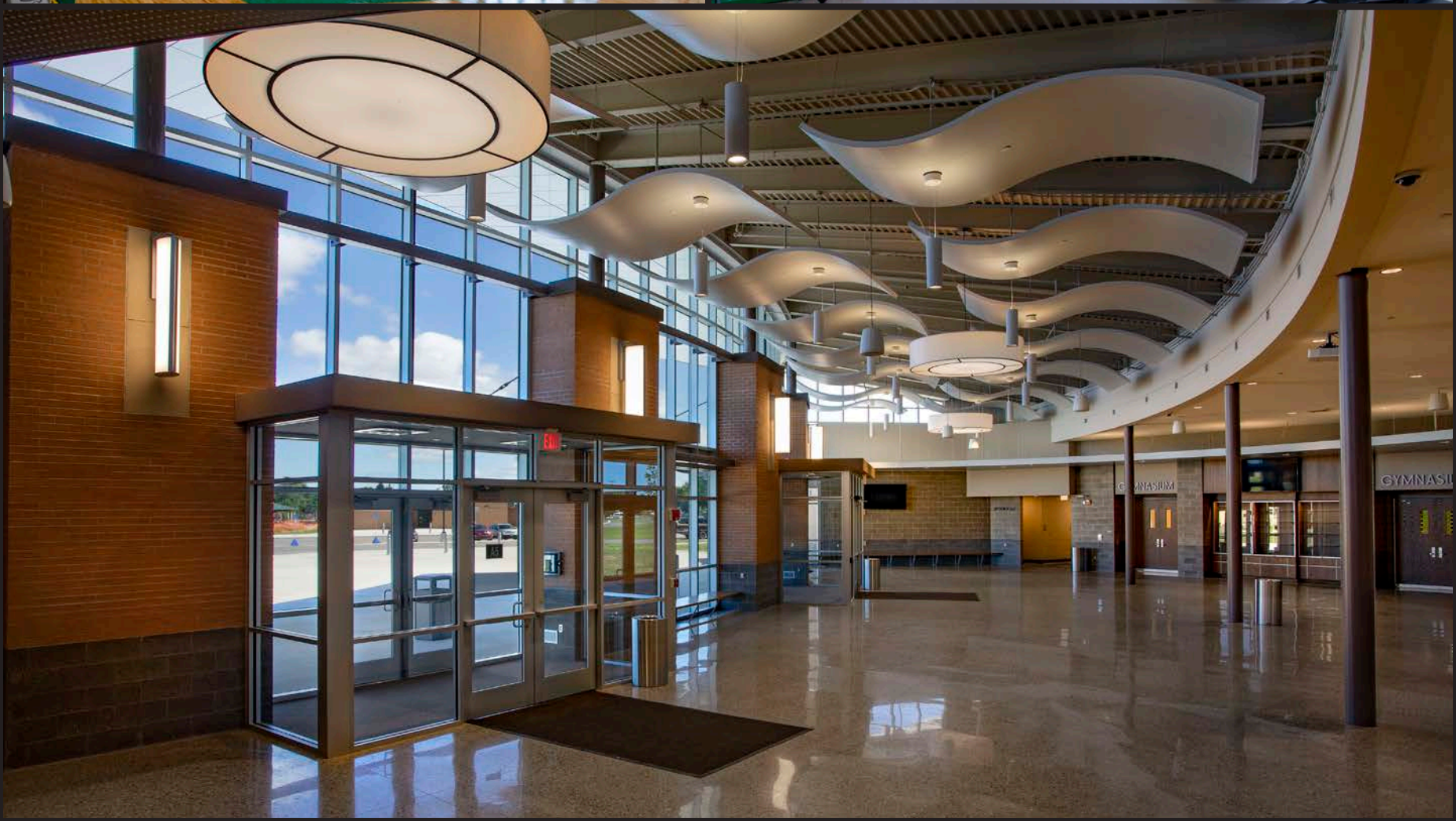
Photographer: Jason Keen + Co. Photography



The Portage Community Senior Center is a community-wide center, with a focus on seniors and associated interests and services, in a multi-use center. This space is meant to be an inviting, inclusive, and diverse center of community activity and intended to be one of the anchors for the civic hub and heart of the community.

The Center is a 36,000 SF facility with a partial lower and second level with a mezzanine comprised of office support functions, multi-purpose fitness, community event, and continuing education rooms. The center includes multi-functional outdoor spaces for outdoor activities, gatherings, and events. Features of the building include multi-purpose rooms with the capability to accommodate large groups with a performance stage, a courtyard and outdoor fireplace for socializing, a terrace for warm weather activities, and a multi-purpose activity space that can accommodate pickleball, fitness classes, and a promenade for indoor walking in Winter. Also included is a commercial kitchen to facilitate cooking classes and catered events, a banquet facility to accommodate public and private events, ADA accessible restrooms, seminar and classroom space, coffee shop, gaming space for activities such as billiards and table tennis, as well as a dedicated space for quiet reading and reflection.







Arts & Athletics Center

Berrien Springs, Michigan

CARMI Design Group, Inc.

Client: Berrien Springs Public Schools | Berrien Springs, Michigan
Category: Built

Architect: Tony C. Leininger, AIA

Civil Engineer: Wightman

Plumbing, Mechanical & Electrical Engineer: Millies Engineering Group

Structural Engineer: JDH Engineering

Theater and Acoustical Consultant: Scheu Consulting Services, Inc.

Technology Consultant: AE Tech Design

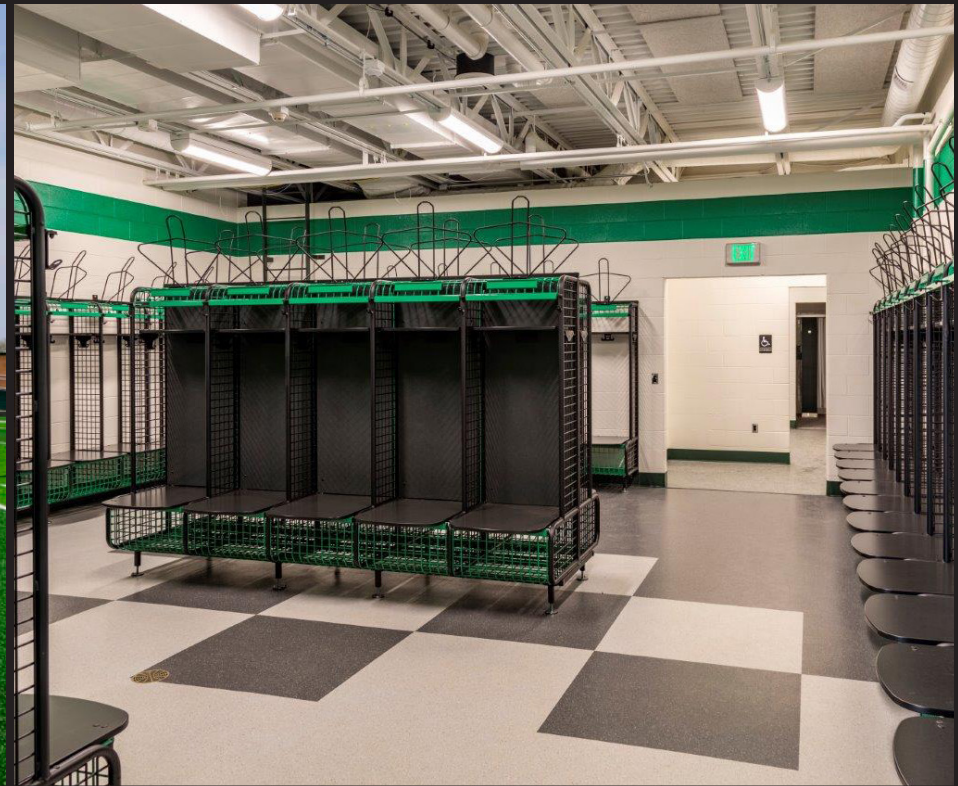
Construction Manager: Beckering Construction

Photography: John Tirota | Tirota Photo Productions

This 77,000 square-foot Arts and Athletic Center (AAC), in the heart of Berrien Springs Public Schools' campus, was intentionally positioned between the existing high school, which will ultimately become the middle school, and the future high school to be built on the opposing side. The objective was to maximize the AAC's developed area by sharing a competition gymnasium and performance auditorium between the two facilities. A common lobby connects Athletics and Fine Arts in Phase 1 and will eventually join the future high school in Phase 2.

The district's vision was clear from the beginning - provide improvements equally between its Fine Arts and Athletics programs. Fine Arts received a 750-seat performance auditorium developed to effectively expose their successful band and choir programs and provide the necessary tools for dramatic arts. Surrounding the auditorium are rehearsal rooms for band and choir, and dressing rooms and stagecraft for dramatic arts. Athletics gained a competition gymnasium with three practice courts and a spectator capacity of 1,500 seats. A state-of-the-art fitness room, locker rooms, and training space support the gymnasium for all indoor sports.

All restrooms within this expansion were designed with sensitivity toward gender neutrality by providing individual toilet rooms for privacy.





Sylvester Stadium

Berrien Springs, Michigan

CARMI Design Group, Inc.

Client: Berrien Springs Public Schools | Berrien Springs, Michigan

Category: Built

Architect: Tony C. Leininger, AIA

Civil Engineer: Wightman

Plumbing and Mechanical Engineer: Creative Design Services

Electrical Engineer: ETS Engineering

Structural Engineer: Paul Fujawa Engineers, Inc.

Technology Consultant: Secant

General Contractor: Pearson Construction Company, Inc.

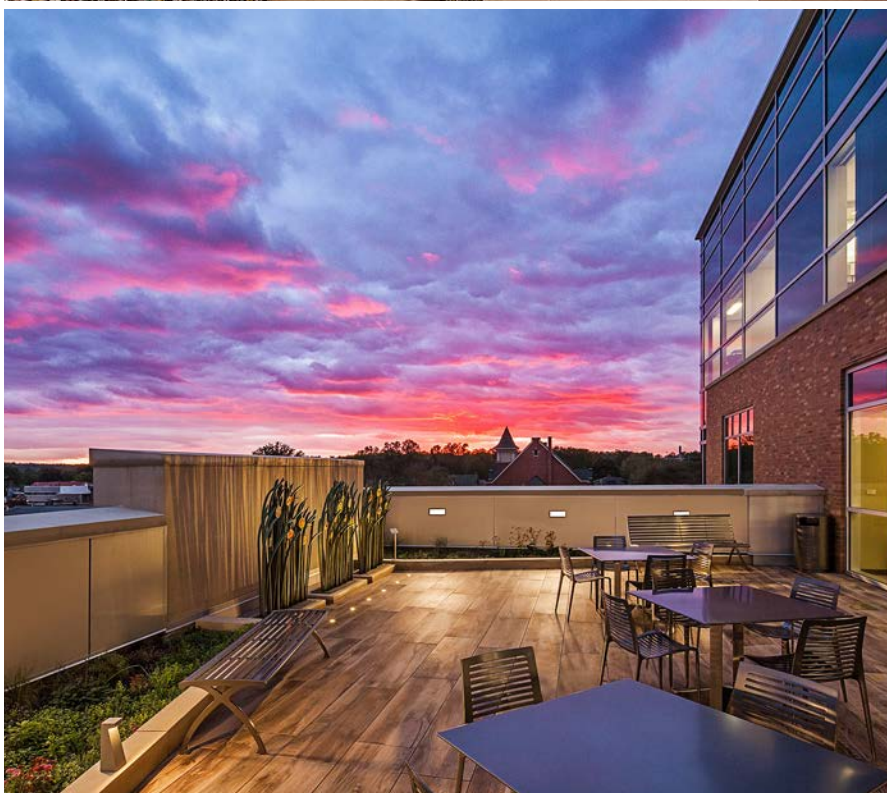
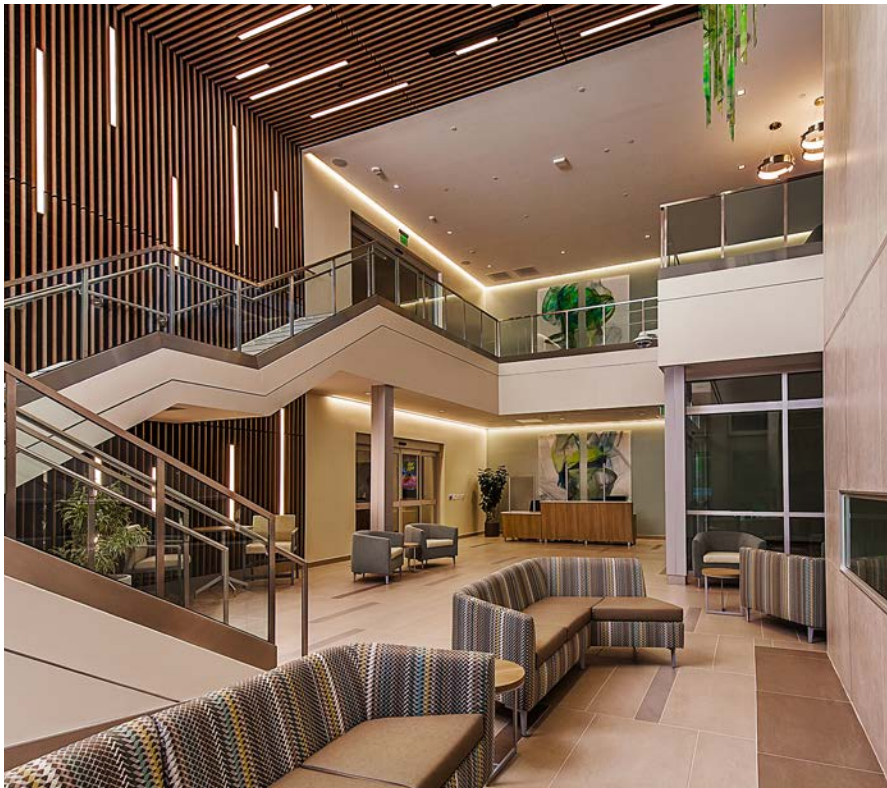
Photography: John Tirota | Tirota Photo Productions

Sylvester Stadium is a direct result of a campus-wide master plan study and the desire to organize common uses more effectively. Before this development, the district had a soccer field and running track in one location, and a football stadium in another. Combining all outdoor track and field activities opens up the heart of campus for future development.

Circulation is always a key design element when attempting to safely segregate pedestrian and vehicular traffic. Pathways, fencing, and gates allowed us to maintain day-to-day student traffic as well as game-day spectator traffic, especially ticket management.

A K-12 public school district with all learning facilities and sporting events located on one campus meant that creating safe, walkable grounds with effective connectivity was very important.

COVID taught us how to interact effectively, but remotely. With the uncertainty of in-person spectator involvement, the district decided to invest in live stream cameras to broadcast their games remotely to local "Shamrock" fans or those alumni located across the country.



Opening in 2021, this project provides a new 84,000 sf cancer center in Kalamazoo, Michigan. The design team worked with Bronson to expand their campus; providing an opportunity to update their campus aesthetic. This new aesthetic incorporated elements from the original campus such as brick, cast stone and a customized curtain wall color. Rather than the traditional punched window in a brick wall, these elements were reinterpreted as layers of brick and stone applied to a glass core.

The building program is vertically stacked to match the sequence of the patient's visit. But the building is more than blood draw, exam and infusion rooms. During the cancer journey, patients, care givers, family and friends need places of respite. There are tucked-away spaces like the rooftop balcony, comforting spaces like the lobby fireplace, energized spaces like the café and contemplative spaces like the healing garden.

The nature of the building itself provides physical health for the larger southwest Michigan community. But the building should not feel like a clinic for just cancer in the body. It should be a welcoming, inclusive, inspiring place for the wellness of the entire person and their family and in turn the greater southwest Michigan community.

Bronson Cancer Center

Kalamazoo, Michigan

Diekema Hamann Architecture & Engineering

Client: Bronson Methodist Hospital | Kalamazoo, Michigan
Category: Built

Architect, Mechanical, and Electrical Engineer:
Diekema Hamann Architecture & Engineering
Structural Engineer: Nehil-Sivak PC
Civil Engineer: AR Engineering
Landscape Architect: O'Boyle, Cowell, Blalock & Associates
Construction Manager: CSM Group
Photography: Jeff Garland Photography





Centrica Care Navigators, previously Hospice Care of Southwest Michigan, is a non-profit organization focused on helping clients and families through every aspect of their medical journey or illness. They provide a holistic approach to care through various services from adult day and end of life care to grief support and programs focusing on the care of grieving youth. Through the design of their new headquarters, this renovated building now provides a functional workplace for staff, offering a balance of open collaborative space, as well as quiet areas promoting focus and reflection.

Previously a furniture showroom, the existing building consisted of retired design elements, giving the illusion the building was heavy and tired. The south side of the lower level is below grade and became a focus during design to bring light and energy into previously dark, uninviting spaces. The central stair was opened by removing walls and adding glass. This strengthened the connection between the two levels while engaging the lower level collaboration hub. Several new window openings were added on both levels, allowing natural light to flood the office. This new space is bold, bright, and resilient, while offering comfort, hope, and support during difficult, yet meaningful times.





New Central Offices

Kalamazoo, Michigan

Diekema Hamann Architecture & Engineering

Client: Centrica Care Navigators | Kalamazoo, Michigan

Category: Built

Architect, Mechanical, and Electrical Engineer:

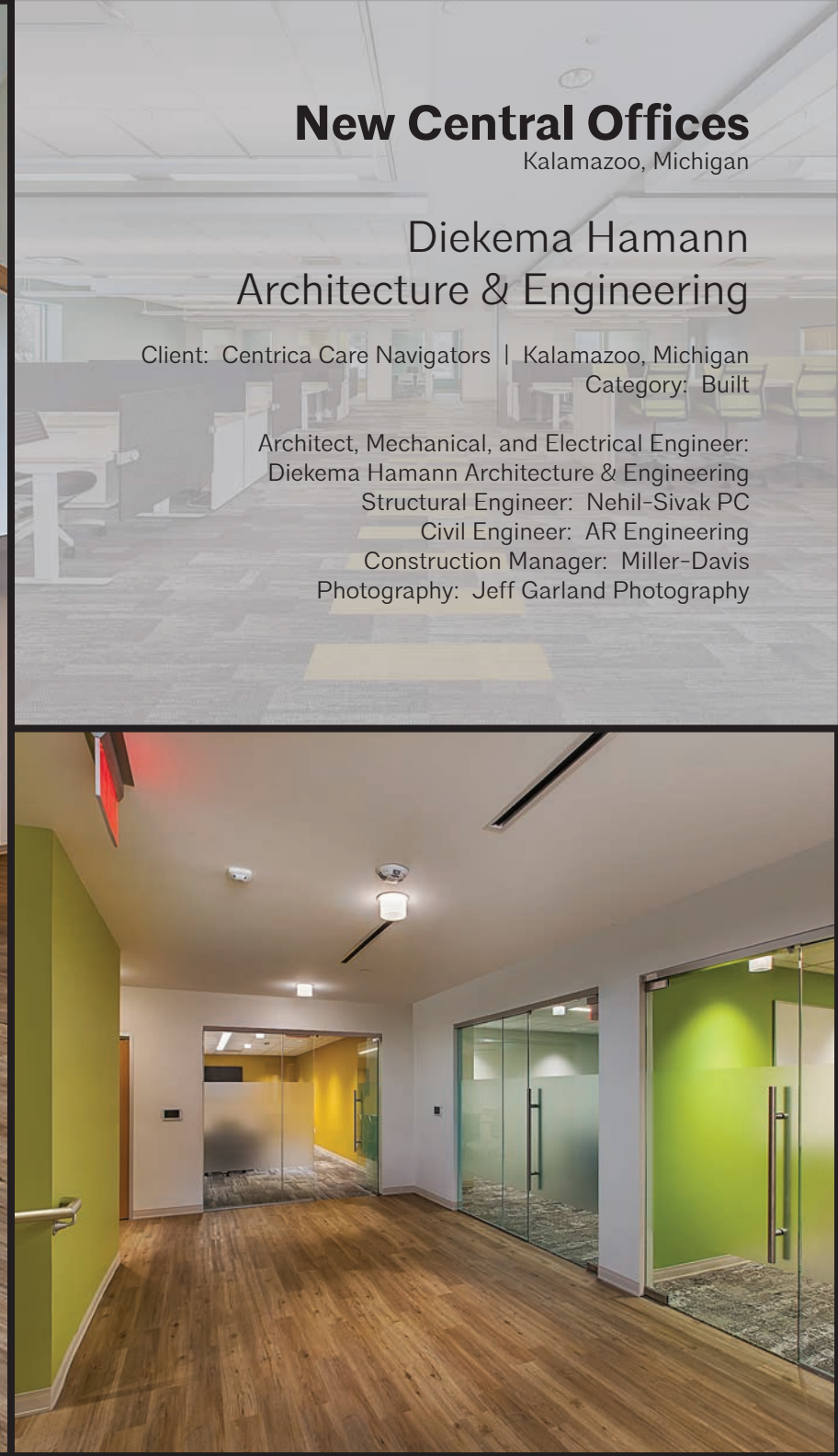
Diekema Hamann Architecture & Engineering

Structural Engineer: Nehil-Sivak PC

Civil Engineer: AR Engineering

Construction Manager: Miller-Davis

Photography: Jeff Garland Photography





St. Thomas More Student Parish Cross Dedication

Kalamazoo, Michigan

Diekema Hamann Architecture & Engineering

Client: St. Thomas More Student Parish | Kalamazoo, Michigan

Category: Built

Architect, and Electrical Engineer:
Diekema Hamann Architecture & Engineering
Structural Engineer: Nehil-Sivak PC
Construction Manager: Miller-Davis

After serving St. Thomas More Student Parish for 20 years, Father Ken Schmidt's departing gift and vision was for the church building to be clearly identified as a Catholic church with a mission to, "...welcome all who wish to participate in building the kingdom of God in the college communities of Kalamazoo."

The cross connects people to place by catching the sun as it sits above the roof line and is illuminated by light at night. It can be seen from a distance with the sky as a backdrop. Human connection is promoted by the scale and simplicity of the cross which engages the residences that surround it on three sides.

The design process supported the continued long-term relationship between designers and users. The design intentions that were identified when the addition was built (simplicity, flexibility, efficiency, intimacy, contextual and stewardship). As are used in the primary structure within the sanctuary, two vertical steel channels are used for the structure of the cross. Originally, we tried to brace from only the lower points at the top of the concrete wall. However, structural analysis revealed the design required using the roof and upper bracing to attach into the previously existing LVL beam.







Clear Vision Eye Institute

South Jordan, Utah

Eckert Wordell

Client: Pacific Clear Vision Institute | Eugene, Oregon

Category: Built

Architect: Eckert Wordell

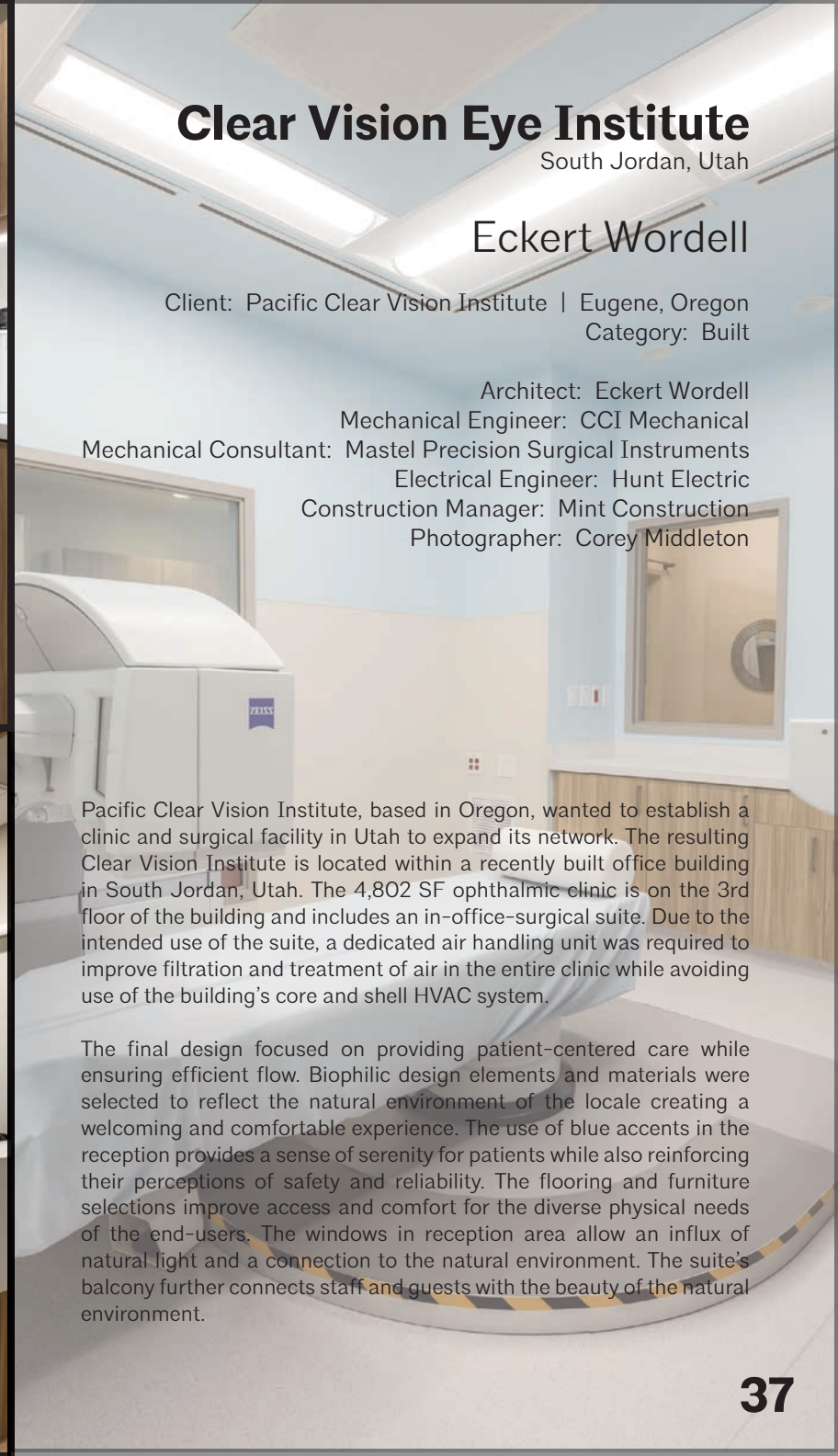
Mechanical Engineer: CCI Mechanical

Mechanical Consultant: Mastel Precision Surgical Instruments

Electrical Engineer: Hunt Electric

Construction Manager: Mint Construction

Photographer: Corey Middleton



Pacific Clear Vision Institute, based in Oregon, wanted to establish a clinic and surgical facility in Utah to expand its network. The resulting Clear Vision Institute is located within a recently built office building in South Jordan, Utah. The 4,802 SF ophthalmic clinic is on the 3rd floor of the building and includes an in-office-surgical suite. Due to the intended use of the suite, a dedicated air handling unit was required to improve filtration and treatment of air in the entire clinic while avoiding use of the building's core and shell HVAC system.

The final design focused on providing patient-centered care while ensuring efficient flow. Biophilic design elements and materials were selected to reflect the natural environment of the locale creating a welcoming and comfortable experience. The use of blue accents in the reception provides a sense of serenity for patients while also reinforcing their perceptions of safety and reliability. The flooring and furniture selections improve access and comfort for the diverse physical needs of the end-users. The windows in reception area allow an influx of natural light and a connection to the natural environment. The suite's balcony further connects staff and guests with the beauty of the natural environment.





CRB Kalamazoo

Portage, Michigan

Eckert Wordell

Client: CRB | Portage, Michigan
Category: Built

Architect, Mechanical, Electrical, and
Plumbing Engineer: Eckert Wordell
Construction Manager: AVB



CRB needed to move into a newer building with a design that reflected their corporate values and provided employees with an inspiring and engaging workplace. Several facility options, as provided by CRB's commercial real estate firm, were evaluated using their final program and test-fits were developed. Through this vetting process a site, just off of a major highway in Portage, Michigan, was selected for build-out.

The resulting 11,616 SF suite allowed for a design that met programmatic needs including meeting, collaboration rooms and flexible work options. The variety of work zones were designed to enhance connection between employees, enhance collaboration, and improve communication. The flexible officing, collaboration zones, and seating options allow for greater occupant comfort and engagement. The cubicles and employee lounge are located along the exterior wall providing the space with natural light than penetrates through to collaboration zones. CRB's core values are expressed throughout the space connecting employees to the firm and purpose. An uplifting and energizing environment was achieved through the use of vibrant colors throughout the space. The use of core values and key colors, materials, and furniture options were used to enhance collaboration and a sense of connection to CRB and each other.





San Antonio Eye Center ASC

San Antonio, Texas

Eckert Wordell

Client: San Antonio Eye Center | San Antonio, Texas

Category: Built

Architect, Mechanical, Electrical,
and Plumbing Engineer: Eckert Wordell
Structural Engineer: JDH Engineering
Accessibility Consultant: I Design Access LLC
Civil Engineer: KLove Engineering
Construction Manager: BBD Construction
Photographer: Jerry B. Smith Photography



San Antonio Eye Center's new ASC addresses their need for a larger, modern facility designed to meet their surgical needs by providing them with a larger reception area and additional surgical space.

The final program for the facility resulted in a 11,553 square foot, 3-operating room ASC on a 0.42-acre site. To meet the programmatic needs of the surgery center, a basement was provided to house the mechanical equipment reducing the footprint to 9,267 SF.

To achieve a welcoming and comfortable environment, biophilic design strategies were used including incorporating natural stone on the exterior and wood tones with a neutral color palette. The use of blue accents in the reception provides a sense of serenity while also reinforcing perceptions of security, safety, and reliability. The incorporation of a large expanse of windows in reception area allows for an abundance of natural light reinforcing the connection to nature.

The patient flow through the facility was planned for efficiency and to limit movement as much as possible reducing anxiety while meeting the programmatic needs of the facility and the increase surgical needs of the community.

The project planning for this facility began in 2008 and went through many iterations of concept and design along the way. KGM is a faith based not-for-profit group that uses their faith as an anchor to help guide their way in helping the most vulnerable populations in the Kalamazoo community. The building is three stories totaling approximately 37,000 s.f. The building is connected to the existing Hildebrand building which contains the main dining and kitchen facilities for the entire KGM campus. The dining acts as a hub between this new women's and children's shelter and the men's shelter.

The main level of the building is intended for a more transient population that uses the facility as an overnight shelter. The second and third floors are where the women with children stay in a more apartment-like setting where they can stay for longer terms in an effort to get more permanent living situation and to gain the other help they might need to make their lives better.

The exterior of the building is intended to have a residential feel with a sloped metal roof, brick base and horizontal siding. The strong faith of KGM is highlighted in the predominate lit crosses at the southwest corner of the building.





A Shelter From Their Storm

Kalamazoo, Michigan

Schley Nelson Architects

Client: Kalamazoo Gospel Ministries | Kalamazoo, Michigan

Category: Built

Architect: Kris Nelson, AIA

Engineers: EPI, and Driesenga and Associates

Construction Manager: AVB

Photographer: Casey Spring





Eastern Cherokee Language Speakers Academy

Cherokee, North Carolina

Seven Generations Architecture + Engineering

Client: Eastern Cherokee Cultural Center

Category: Conceptual

Design Architect: Jeremy Berg, AIA, NCIDQ, LEED AP BD+C

Design Firms:

Seven Generations Architecture + Engineering LLC | Clark Nexsen

Design Team Members:

Steve VandenBussche, AIA, LEED AP

Chad Roberson, AIA (Clark Nexsen)

Richard Fort, AIA (Clark Nexsen)

Aaron Brumo, AIA (Clark Nexsen)

Adam Torrey, AIA (Clark Nexsen)

Andrew Shields (Clark Nexsen)

The design for the Eastern Cherokee Language Speakers Academy is rooted in the rich history of a tribe that has called the land of Western North Carolina home for more than 10,000 years. The Eastern Cherokee culture has been passed along primarily orally, rather than through written word, with elders sharing the stories, experiences, and lessons with younger generations. In an increasingly modernized world, these interactions have become less common, risking knowledge lost over time. The design team had this in mind as it worked to create a space to foster intergenerational relationships and help preserve language and culture.

Historically, Eastern Cherokees had separate residences for summer and winter, changing locations as the seasons and their needs changed. The design team sought to create a place that reflects this history. The bifurcated design includes open-air “summer” classrooms with large sliding glass panel door systems, as well as a large, fully enclosed “winter” classroom, complete with a locally-sourced stone fireplace as centerpiece.

These dual season classrooms join generous community spaces – including patios, wrap-around porches, and a traditional garden of fruits, vegetables, and traditional medicines – with the intention of strengthen ties among its users and between generations.



This client's goal was to maximize a compact footprint to meet a growing demand for contemporary housing in Kalamazoo's core with mixed-use, pedestrian-scale amenities synergistic with surrounding infrastructure.

The innovative design allows for 99 parking spots for 97 residential units through a private garage partially below grade while remaining above the water table. This approach made nearly the entire site available for parking without sacrificing street-facing retail visibility. The design also creates a highly distinctive elevated retail boardwalk, seven live-work units connected as a collaborative commercial community, and the opportunity for a premier, two-story, corner restaurant. What's more, the residential balconies and restaurant's rooftop deck create a vertical neighborhood, with building cladding and fenestration designed to acknowledge and respect its historic neighbors.

The dramatic combined staircase and ramp puts ADA-compliance not as an afterthought but at the forefront of the design, creating a welcoming space for all residents and visitors alike. Passersby can stroll along the city sidewalk level and stop to sit along the lush green wall concealing the parking garage. Or they can opt to peruse the elevated boardwalk, chatting with artists, makers, and entrepreneurs who've made South Edwards their home and place of work.



South Edwards Street Project

Kalamazoo, Michigan

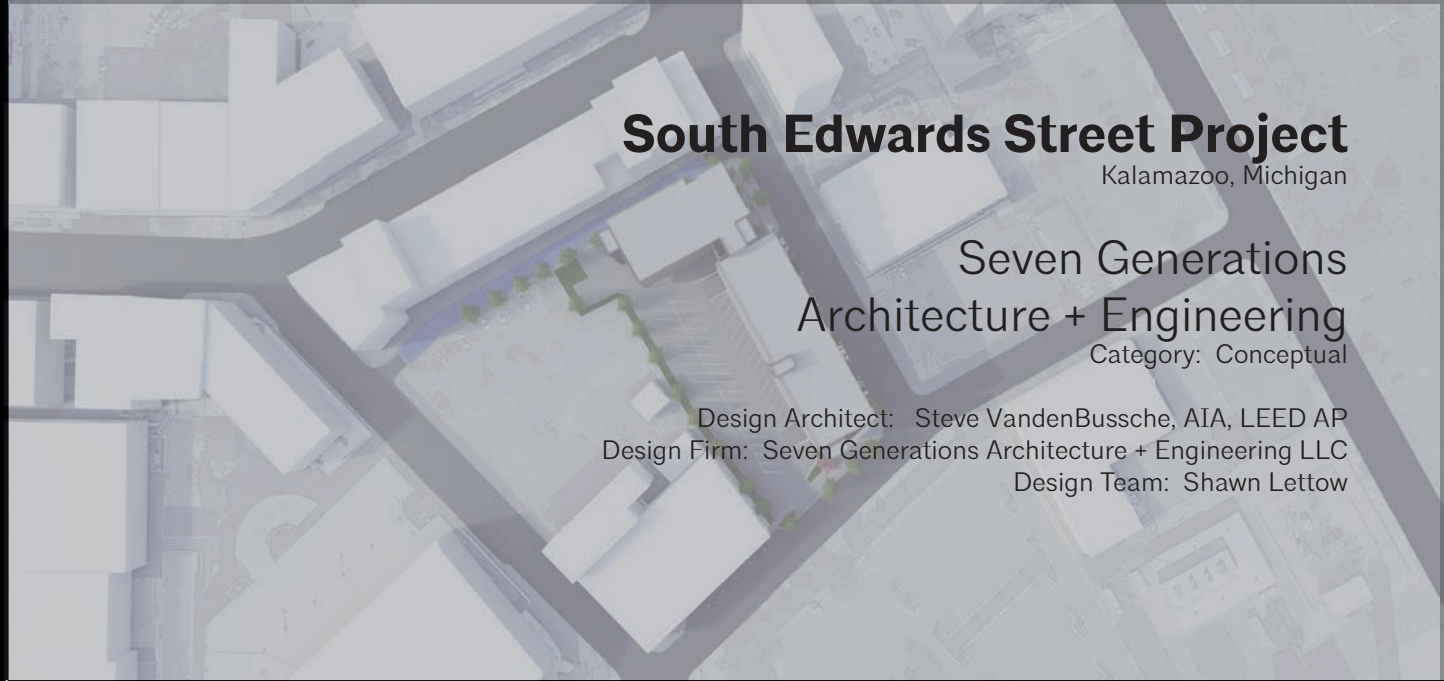
Seven Generations Architecture + Engineering

Category: Conceptual

Design Architect: Steve VandenBussche, AIA, LEED AP

Design Firm: Seven Generations Architecture + Engineering LLC

Design Team: Shawn Lettow







Matchhead Coffee

Kalamazoo, Michigan

Seven Generations Architecture + Engineering

Client: Radiant Church | Kalamazoo, Michigan

Category: Built

Design Architect: Steve VandenBussche, AIA, LEED AP

Architect of Record: Brian Kwekel, AIA

Mechanical Engineer:

Ryan Wielenga, PE | The Steelhead Engineering Company

Electrical Engineer: Doug Sayles, PE | ETS Engineering

Structural Engineer: Tom Palarz, PE | Nehil Sivak

Construction Manager: CSM Group

Photographer: Casey Spring

Radiant Church retained Seven Generations A+E to design a new café for their downtown Kalamazoo campus. The church purchased the multi-level tenant space with the intention of opening a café to serve as a welcoming destination for everyone to enjoy. The resulting space embodies the city's ongoing commitment to a walkable and diverse community.

It was important to project leaders that the café be free of church or religious icons to create a setting for people of all faiths and backgrounds to feel welcome. Beyond that, the client required a unique level of adaptability, as name and branding choices had not been made. The 7GAE team created a design allowing flexibility for a wide variety of easy "plug-and-play" choices that would ultimately showcase a specific brand aesthetic.

The community engagement approach extended into the design team itself, as a local custom cabinet maker joined the team to help develop the unique focal points of the interior architecture. The collaboration resulted in the custom vertical elements as well as the modular, geometric ceiling design that mitigates sound reflection and creates intimacy and energy for both solo travelers and local groups of friends and colleagues.



The 2018 Bond Program for Jackson Public Schools fulfilled the District's goal of creating facilities that are innovative, welcoming, modern, and collaborative.

The new 1-story, 62,000 SF school replaces an elementary school that was no longer supporting Jackson Public Schools' curriculum and space needs. The 500-student capacity school is designed to be compact, allowing for shorter travel distances within the building for young learners.

The building is organized with three wings connected to the welcome center lobby. Visitors are routed through the main office with subtle, friendly secure entry. The three main color-coded learning wings aid in users' way finding. Central core elements can be isolated from these wings for after-hour use and pairs of classrooms share small storage rooms and bathrooms. The gymnasium features a platform for performing arts needs and is connected to the music room. The media center and arts room are also connected allowing for flexibility to accommodate large or small groups involved in either hands-on or quiet activities.

Versatile and adaptable learning studios along the educational wings were designed to support active learning pedagogies. Two collaboration stations provide extra spaces for flexible learning and movable furniture allows teachers to configure rooms in multiple ways.

Cascades Elementary

Jackson, Michigan

TMP Architecture

Client: Jackson Public Schools

Category: Built

Architect: TMP Architecture

Construction Manager: CSM Group

Photographer: Christopher Lark Photography



As a response to requests by the community, Southwest Community Campus is located in the Roosevelt Park neighborhood, serving 500 diverse high school students. The 7-12 building houses the district's High School dual-immersion program, an extension of their current elementary and middle school programs. Through many intense community engagement sessions where needs and priorities were established, the 70,000 SF building was conceptualized and designed. The building sits on a 5.5 acre multi-use redevelopment site which includes the new High School as well as affordable rental housing, access to health services, community art programs, and shared community spaces. With the urban location, limited footprint, and steep grade of the land, the design team needed to get creative—resulting in the strategic placement of a 4-story building with access/entry points from 2 levels of the site.

The color scheme was selected by the community which features dark blue, green, teal, and light blue—each of which are used on one level of the building to improve wayfinding for students and visitors. In addition to the 28 classroom spaces, extra areas were designed for collaboration and modern learning. The building is certified as LEED Silver and features energy-efficient systems and sustainability focused design.





Southwest Middle/High School Academia Bilingüe

Grand Rapids, Michigan

TMP Architecture + C2AE

Client: Grand Rapids Public Schools

Grand Rapids, Michigan

Category: Built

Architect of Record: TMP Architecture

Engineer of Record: C2AE

Construction Manager: Rockford Construction

Photographer: Christopher Lark Photography





The Rochester Landing concept design focuses on the repurposing of an existing building in a formerly developed area. Due to the removal of other surrounding buildings this building now has a large blank façade which faces the main easterly access point to downtown Kalamazoo. The building is positioned at the edge of the current River Redevelopment District and is in a prime location to link to downtown as well as the neighborhoods. This small-scale mixed-use building would house some offices on the first floor, with residences on the second and third, and a collaborative flex-work environment on a reimaged rooftop area. The strategy for this transformation views the building as both historic and awaiting reactivation. By restoring an asset and adding value by reactivation of utilitarian spaces such as basements and roofs, we extend the life and the interest of this property and celebrate the historic elements while surrounding them with new life and purpose.



Rochester Landing

Kalamazoo, Michigan

TowerPinkster

Category: Conceptual

Design Architects: Tony Reiner and Jason Novotny



Kalamazoo College's new Natatorium is a LEED certified building that celebrates K's rich swimming and diving history while promoting sustainable practices. The building's function inspires its form: The dynamic performance of a swimmer informs the fluid roof stroke, while brick indigenous to campus provides the platform for authentic integrated design. The facility's layout and tailored tile patterns also draw inspiration from the angular "K" logo. The glass windows

of the main entry and lobby offer transparency into the building's recognition space, allowing the swimming and diving program's achievements to be on display even from the exterior.

To integrate these two ambitions, the design conversation focused on the experience of student life, academic achievement, and physical performance. This dialog manifest into a dynamic architecture of two inverted, brick clad, curved roof forms of different heights that converge into a singular, welcoming, east arrival. Within this two-story arrival, a ceremonial stair and bridge activate the volume with movement. In addition to movement these two elements organize an airlock vestibule with interior bike storage, a hall of swimming and diving legacy, and a space for all students to socialize and study.





Natatorium

Kalamazoo, Michigan

TowerPinkster

Client: Kalamazoo College | Kalamazoo, Michigan

Category: Built

Design Architect: Tony Reiner

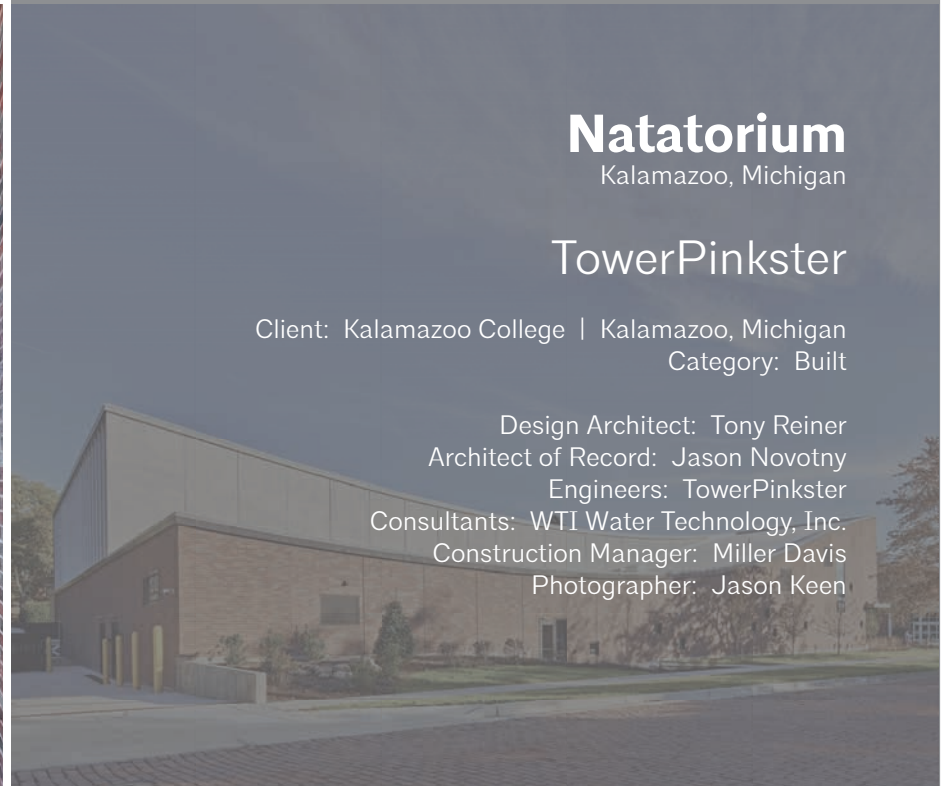
Architect of Record: Jason Novotny

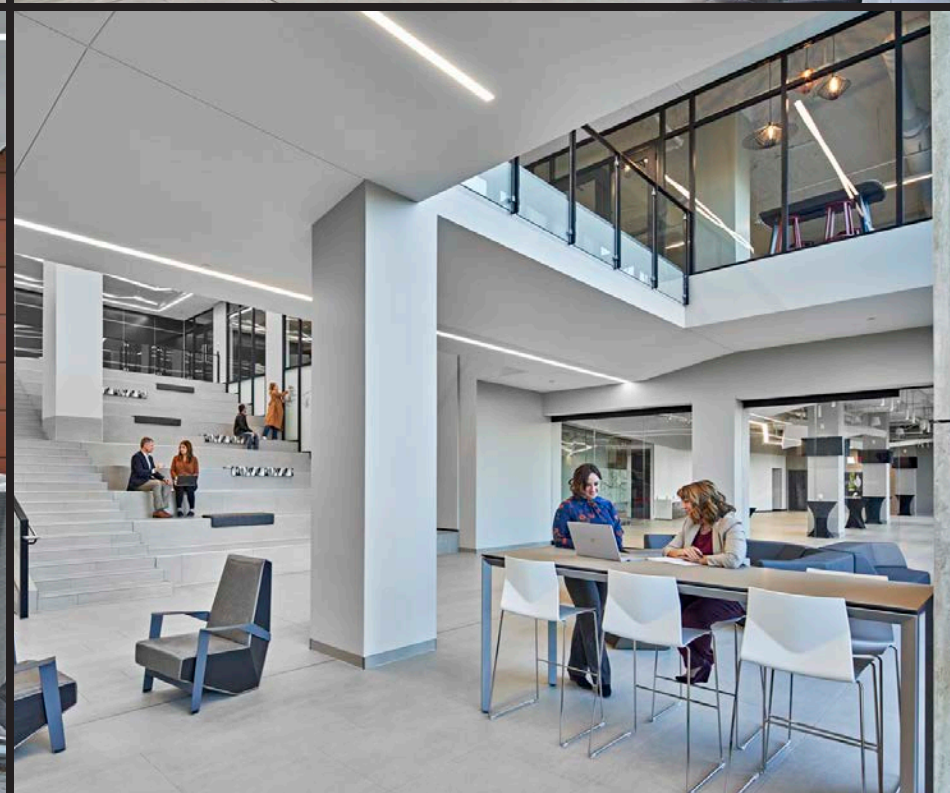
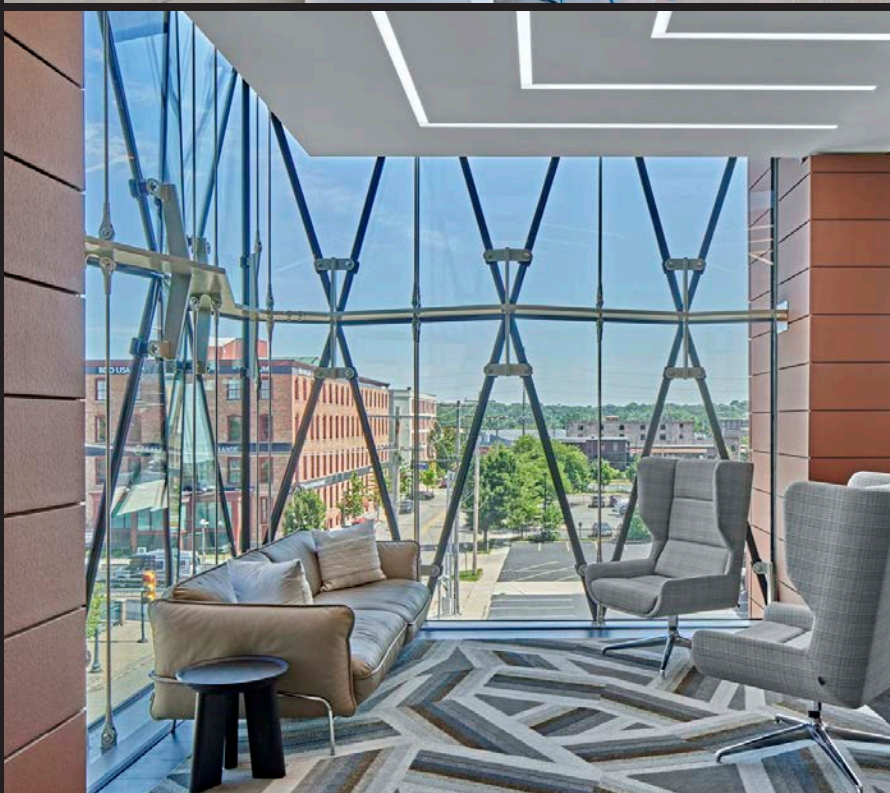
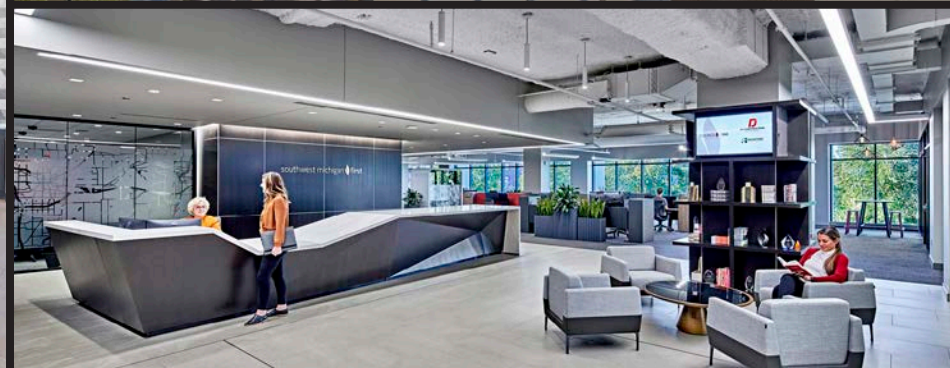
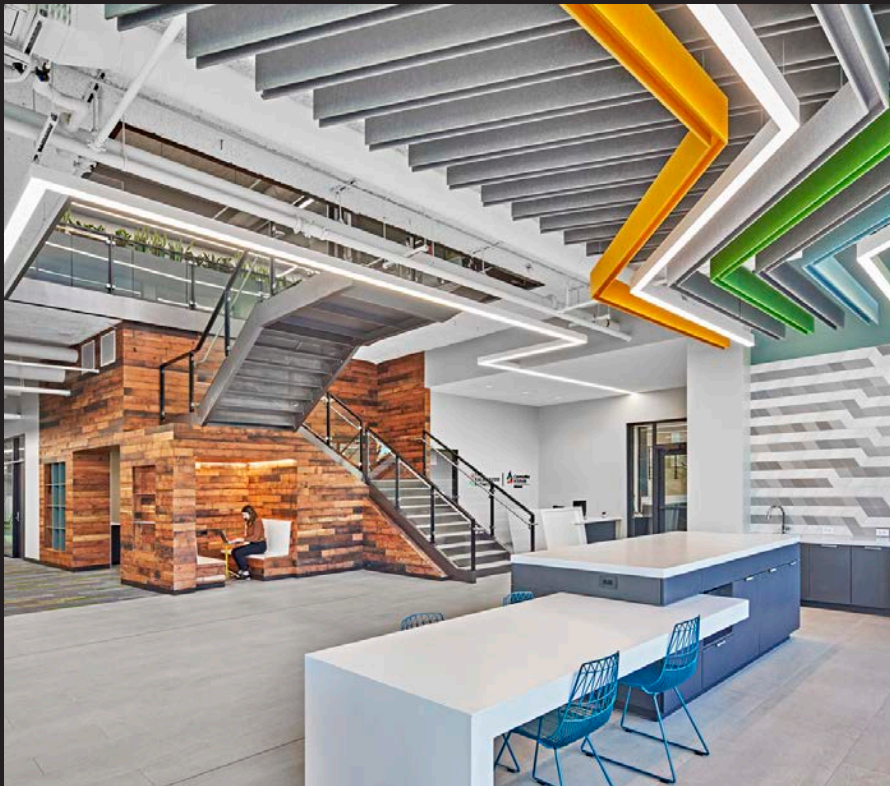
Engineers: TowerPinkster

Consultants: WTI Water Technology, Inc.

Construction Manager: Miller Davis

Photographer: Jason Keen





The Warner Building at 180 Water Street was designed and built as an investment in downtown Kalamazoo. The 275,000 square foot mixed use building features a blend of market-rate and affordable apartments, tenant office space, community gathering areas, event space, and on-site parking. The project was borne from a desire to create a space that could house several impactful local organizations right in the heart of downtown. These tenants include the Kalamazoo Promise Institute, Southwest Michigan First, Stryker Johnson Foundation, and the law firm Warner, Norcross & Judd. The façade design was carefully considered to create a visual mix with layers of materials, textural changes, and detailing of vertical and horizontal elements together. The façade has movement across its length and up through the structurally glazed and faceted crystal corner element. The building is sited on a brownfield site and replaced a 176-space asphalt parking lot. The project in its completed form is truly a 180-degree transformation of the site from an urban heat island of asphalt to a vibrant, interconnected community of users with unique spaces, beneficial interactions, and an intentionality with the architecture as a beacon to Kalamazoo of the potential of connectedness, beauty, and community.

Warner Building at 180 Water Street

Kalamazoo, Michigan

TowerPinkster

Client: Catalyst Development
Kalamazoo, Michigan
Category: Built

Architect: Jason Novotny
Engineers: TowerPinkster
Consultants: WGI
Construction Manager:
CSM
Photographer:
Jason Keen



St. Luke's Ministry Outreach

Kalamazoo, Michigan

Wightman

Client: St. Luke's Episcopal Church | Kalamazoo, Michigan
Category: Conceptual

Design Architect and Design Team Members:
Casey Bourdo, NCIDQ
Greg Monberg, AIA MBA ALEP
Jessamyn Oldfield

As a part of their community outreach, St. Luke's Episcopal Church in Kalamazoo, MI currently runs three ministries including Partners in Housing Transition, a Diaper Bank, and Children's Clothes Closet out of their existing facility. With the quickly expanding need for such services, it was understood that a more efficient space to better utilize and support specific needs was of high importance. A conceptual design study was performed by Wightman to determine the scope of renovations and building addition to the existing church.

Wightman met with St Luke's mission leaders and concept team members to design a space that would not only support the ministry program's intense intake, packaging, and shipping functions but also be an inviting place to welcome the surrounding community. Through a series of meetings, concept group members and church leaders discussed the core goals they would like to satisfy with the new building in addition to continuing to grow and support the needs of the community. The proposed building addition provides adequate space for current as well as future growth, a safe space for all the programs to continue to develop, and welcoming communal space for all visitors and guests regardless of religious affiliation.



Thank You to Our 2022 Sponsors!

Palladium Level

The Eisen Group

Platinum Level



Gold Level



Silver Level



